

# Ingenuity ELO® Table specifications

## HPL Tops:

The core material is 1.125" thick particle board with a phenolic backer sheet and high pressure laminate (HPL) on top making the top 1.25" thick. Complimentary thin PVC edge banding is applied to all sides, square corners.

## HPL Rails:

The core material is 0.935" thick particle board with double sided high pressure laminate (HPL) making the top 1.06" thick. 5" height. Railings match the color of the laminate top. WB standard 3mm PVC edge banding\* is applied to all sides, square corners. 5" height.

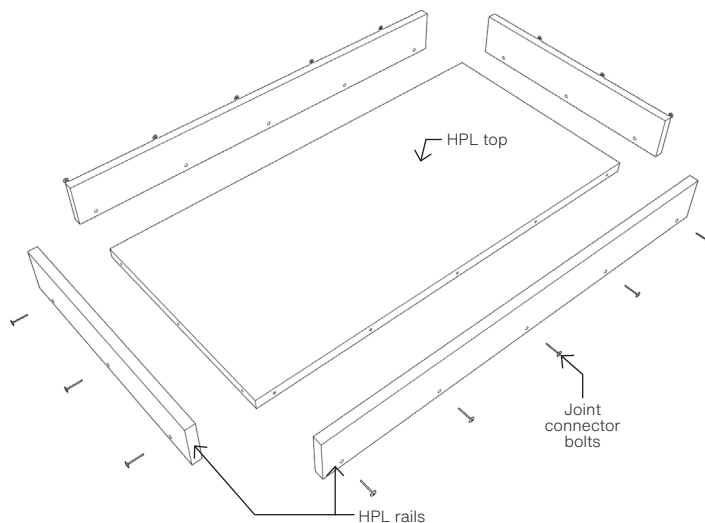
Railings are attached to the laminate top using joint connector bolts going into threaded inserts making it an extremely strong metal-to-metal connection.

\*3mm PVC edge banding is matching, unless otherwise specified. Complimentary color available upon request.

**Shipping Class:** Tops: 70

**NMFC#:** Tops: 83620-2, Legs: 097720

**Assembly:** Unassembled



## ELO® Legs:

Legs are 14-gauge steel tubes which are fully welded to a triangular 10-gauge mounting plate, 1.75" (ELP & ELS) x 14-gauge insert. The mounting plate is secured to the top with six metal-to-metal threaded inserts and 0.25" - 20x15mm joint connector bolts (included). Finish colors are powder-coated smooth silver (G4) or textured black finish (09). See chart below for color availability for each leg type. Finished off with a 1 3/8" adjustment nylon glide with 3/8"-16 thread x 1". (Grand Hank glides are standard on the ELS fixed and Mini Jr. adjustable legs.)

### ELO® Leg Options

(G4) Smooth Silver

(09) Textured Black



ELP  
-ADJ/-EJA\*  
2" Pin Adjustable  
Straight  
Round Legs  
-ADJ: 26.25 - 40.25"  
-EJA: 20.25 - 30.25"



ELS  
-ADJ/EJA\*  
2" Adjustable  
Straight  
Round Legs  
-ADJ: 26.25 - 41.25  
-EJA: 21.25 - 34.25



ELS  
-FX  
2" Fixed  
Straight  
Round Legs  
29.36"



ELS  
-MJA\*  
2" Adjustable  
Mini Junior  
Straight Round Legs  
12 - 19"



\*Heights listed above are for overall table height with standard glides. For overall table height with casters, add 2.11". Height remains the same when adding casters to ELS -FX Legs.

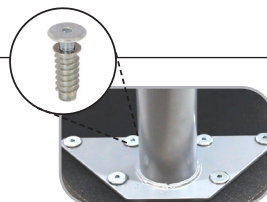
## Standard Features:



Adjustable legs adjust in 1" increments



Pin adjustable legs adjust in 1" increments



Legs attached via threaded metal inserts and bolts

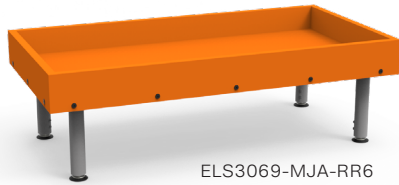


1.375" non-marring glide (Optional ONLY on the ELS -FX & ELS -MJA)



2.5" Grand Hank glide (-HG) (Standard ONLY on the ELS -FX & ELS -MJA)

### Ingenuity ELO® Table



Model #	Wgt	Description	D"x L"	Worksurface H"	Overall H"
ELS3069-MJA-RR6	79	4 Mini Jr. Adj. Straight Round Legs	26.12 x 50.12	12 - 19	15.75 - 22.75
ELS3069-EJA-RR6	85	4 Jr. Adj. Straight Round Legs ↓↑	26.12 x 50.12	21.25 - 34.25	25 - 38
ELP3069-EJA-RR6	83	4 Jr. Pin Adj. Straight Round Legs ↓↑	26.12 x 50.12	20.25 - 30.25	24 - 34
ELS3069-FX-RR6	79	4 Fixed Straight Round Legs	26.12 x 50.12	29.36	33.1
ELS3069-ADJ-RR6	87	4 Adj. Straight Round Legs ↓↑	26.12 x 50.12	26.25 - 41.25	30 - 45
ELP3069-ADJ-RR6	87	4 Pin Adj. Straight Round Legs ↓↑	26.12 x 50.12	26.25 - 40.25	30 - 44
ELS3071-MJA-RR6	92	4 Mini Jr. Adj. Straight Round Legs	26.12 x 62.12	12 - 19	15.75 - 22.75
ELS3071-EJA-RR6	98	4 Jr. Adj. Straight Round Legs ↓↑	26.12 x 62.12	21.25 - 34.25	25 - 38
ELP3071-EJA-RR6	96	4 Jr. Pin Adj. Straight Round Legs ↓↑	26.12 x 62.12	20.25 - 30.25	24 - 34
ELS3071-FX-RR6	92	4 Fixed Straight Round Legs	26.12 x 62.12	29.36	33.1
ELS3071-ADJ-RR6	100	4 Adj. Straight Round Legs ↓↑	26.12 x 62.12	26.25 - 41.25	30 - 45
ELP3071-ADJ-RR6	100	4 Pin Adj. Straight Round Legs ↓↑	26.12 x 62.12	26.25 - 40.25	30 - 44
ELS3082-MJA-RR6	107	4 Mini Jr. Adj. Straight Round Legs	32.12 x 62.12	12 - 19	15.75 - 22.75
ELS3082-EJA-RR6	113	4 Jr. Adj. Straight Round Legs ↓↑	32.12 x 62.12	21.25 - 34.25	25 - 38
ELP3082-EJA-RR6	117	4 Jr. Pin Adj. Straight Round Legs ↓↑	32.12 x 62.12	20.25 - 30.25	24 - 34
ELS3082-FX-RR6	107	4 Fixed Straight Round Legs	32.12 x 62.12	29.36	33.1
ELS3082-ADJ-RR6	115	4 Adj. Straight Round Legs ↓↑	32.12 x 62.12	26.25 - 41.25	30 - 45
ELP3082-ADJ-RR6	115	4 Pin Adj. Straight Round Legs ↓↑	32.12 x 62.12	26.25 - 40.25	30 - 44

↓↑ Indicates sit to stand.

### Optional Features:



Tote tray kit (-TB\_)  
(Clear is standard, see catalog for color selection.)



Dual wheel soft tread locking casters (-CA)\*



3" Heavy-duty locking casters (-HDCA)\*



3" Heavy-duty locking colored casters (-HDCC)\*










1.5" Soft touch glide (-FG)



1.25" Steel glide (-SG)

### 3" Heavy Duty Colored Caster Chart

Model #	SKU	Colored Caster	
-HDCCP	04067882-P	Purple	
-HDCCR	04067882-R	Red	
-HDCCCL	04067882-L	Lime Green	
-HDCCB	04067882-B	Blue	
-HDCCO	04067882-O	Orange	
-HDCCG4	04067882-G4	Grey	
-HDCC09	04067882-09	Black	

\*Casters are NOT to be used as leveling devices and require field assembly. (-CA) raise overall heights by 2.11 and (-HDCA & -HDCC\_) raise heights by 3.5".